

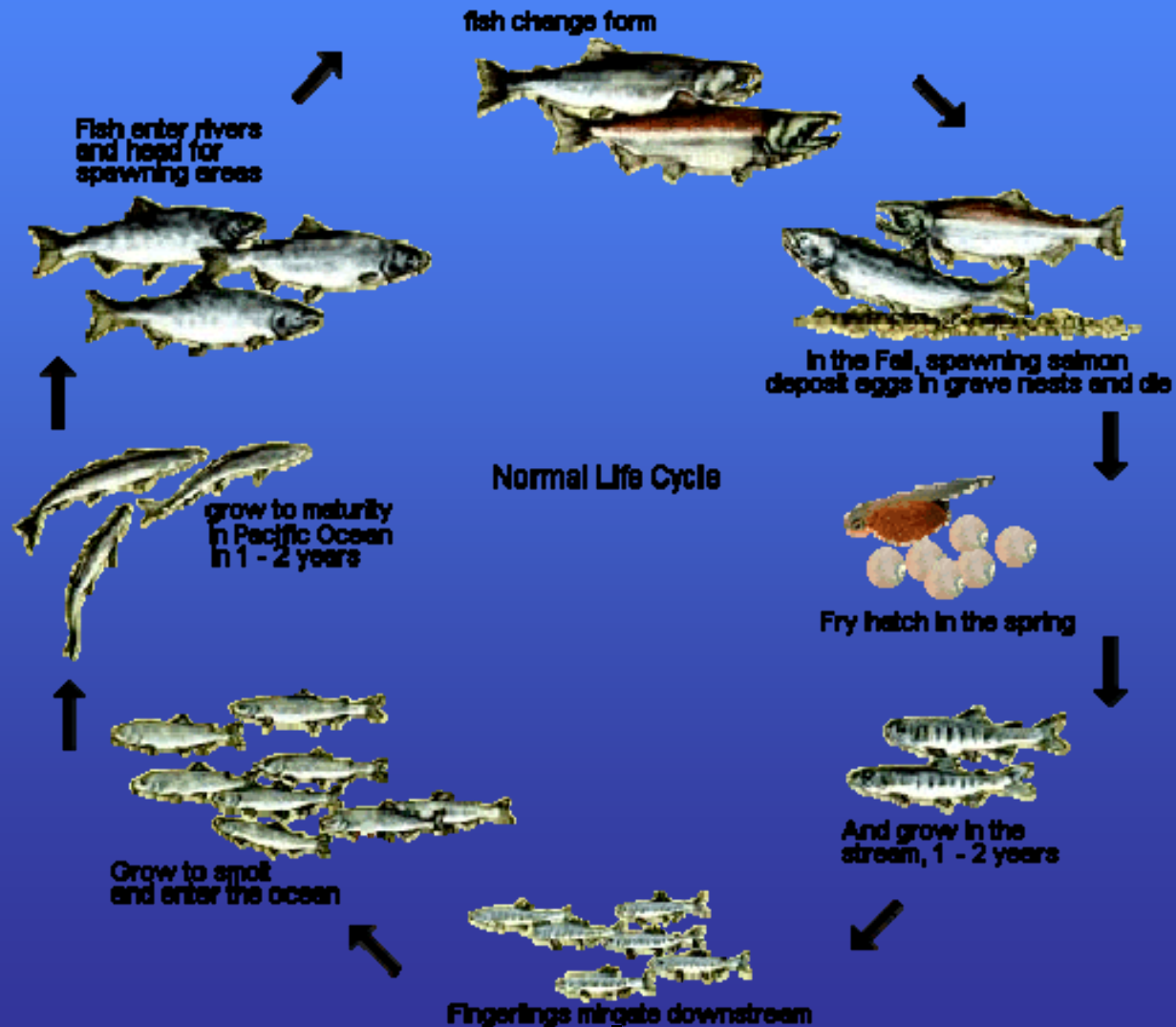
BASIN MANAGEMENT IN A METROPOLITAN SETTING

Soft Solutions for Hard Problems:

Saving Endangered Salmon

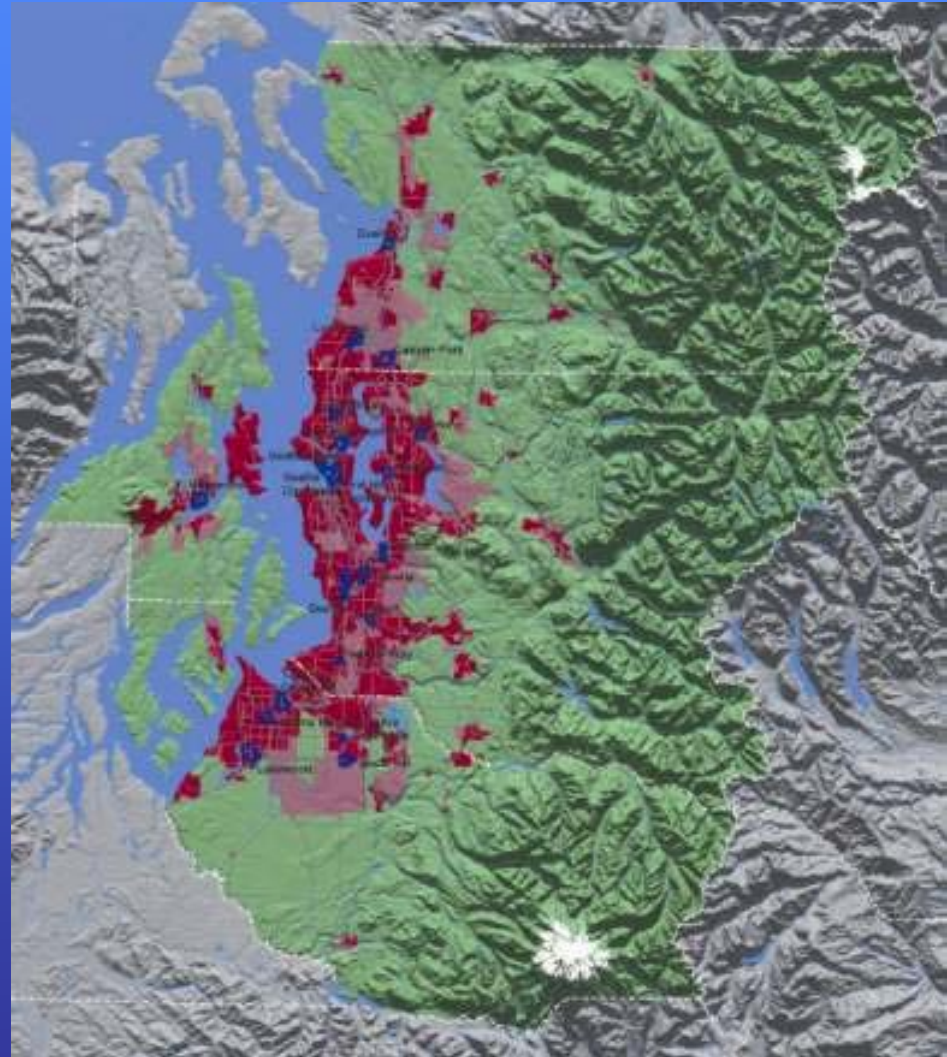
Margaret Pageler
Seattle, USA
March, 2006

Salmon Life Cycle and Urbanization



Density along the shore

Seattle metropolitan area has 3 million people in a narrow strip between mountains and saltwater

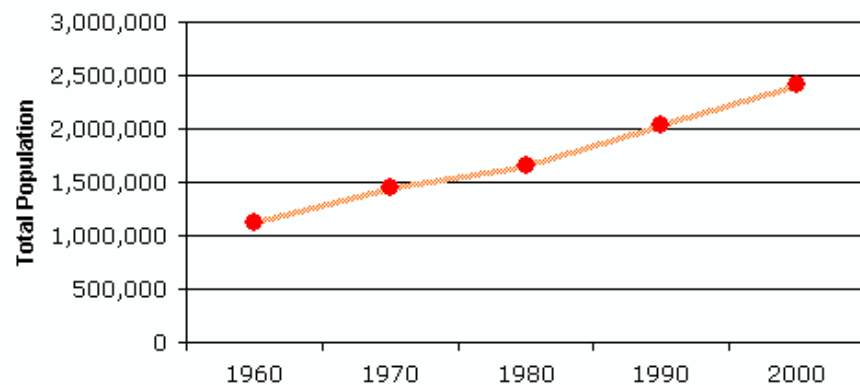


Endangered Salmon – The Environmental Challenge

- Waters and shorelines have been altered and polluted
- River water flows have changed
- Population growth stresses water supply



Population, 1960-2000



Political Challenge – Local Fragmentation and Central Neglect

- Central government mandates protection but doesn't provide resources
- Local government is fragmented and highly decentralized
- 70 towns and cities agree – they loathe and distrust the central city
- Strong political tradition of local autonomy and private property rights



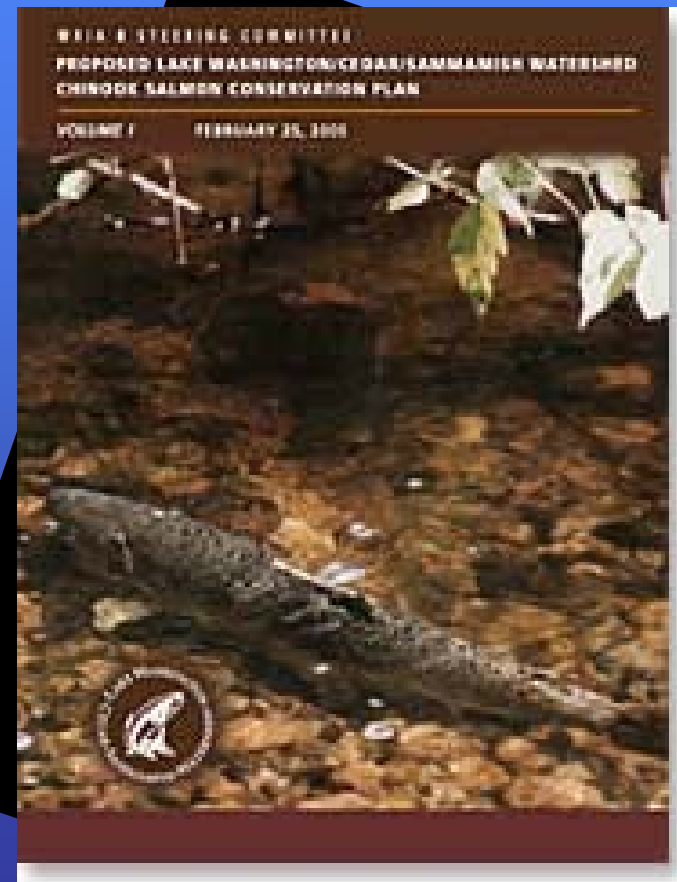
Getting Started

- Establish a non-coercive political environment
- Involve women mayors and council members
- Respect autonomy
- Craft fair cost-sharing
- Build small successes
- Build trust
- Market the icon
- Mobilize citizen support



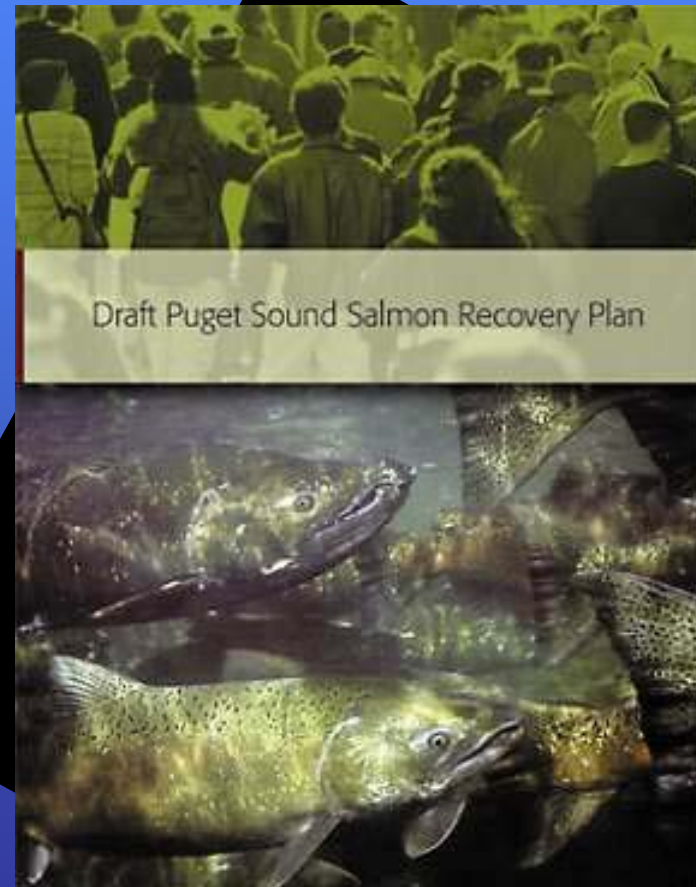
Power Sharing

- Inter-local compact
- Decision-making “forum”
- Rotating or shared chairmanships
- Meetings held in the suburbs, not the central city
- Voting
- Stakeholder steering committee



Cost Sharing

- Funding formula based on population, area, and value
- Shared staff
- Science team
- Joint applications for grants



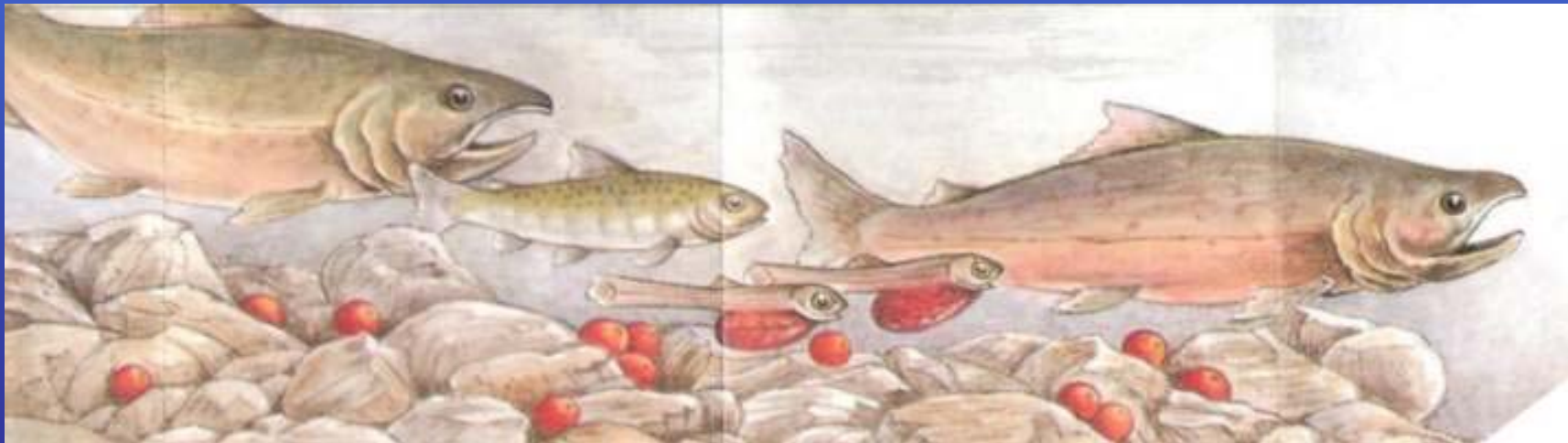
Ensuring Broad Public Support

- Market the icon
- Mobilize citizen support
- Involve and empower key stakeholders



Achievements

- 100% participation in basin planning by local governments
- Broad-based support for salmon recovery from business, industry, and environmentalists
- Adopted science-based strategies
- Local politicians “win” as restoration projects improve rivers and streams
- Cooperative applications for state and federal grants
- All salmon recovery plans are integrated to form a master strategy for Puget Sound



Resources

Water conservationwww.savingwater.org

Puget Salmon recoverywww.sharedsalmonstrategy.org

Cedar River salmon recovery<http://dnr.metrokc.gov/Wrias/8/index.htm>

Other salmon efforts.....www.mrsc.org/Subjects/Environment/esa/esa-prog.aspx

Margaret Pagelerwww.margaretpageler.com

