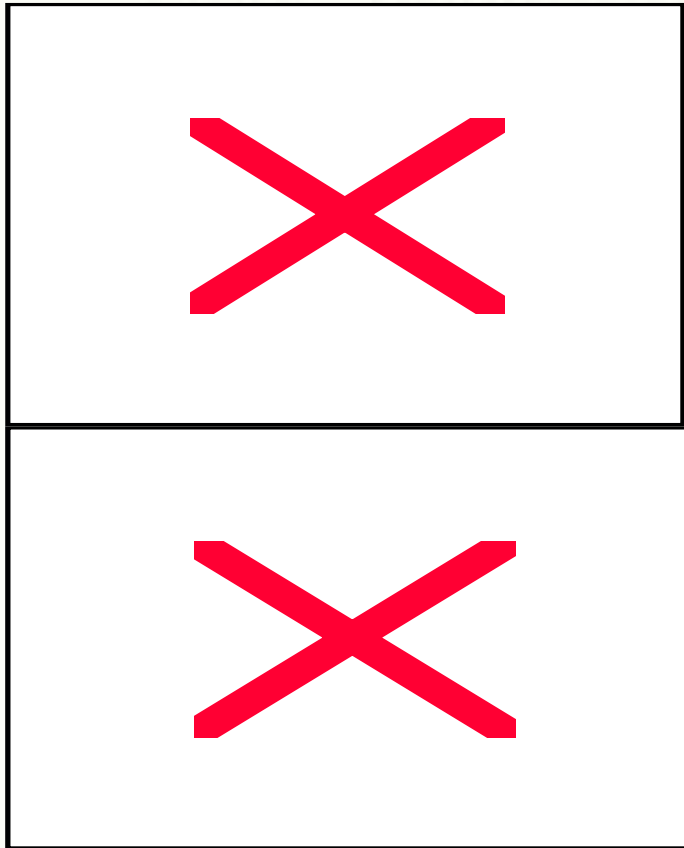


# Advancing cities environmental management towards sustainability

The project Managing Urban  
Europe -25

# Managing Urban Europe-25 (MUE-25)



# Key sentences:

- improve the environments and the environmental impacts of European cities through better implementation of environmental management systems.
- elaborate and test an integrated management system for local governments to achieve a community based, integrated, practical and efficient management system for the environment applicable to the whole urban area

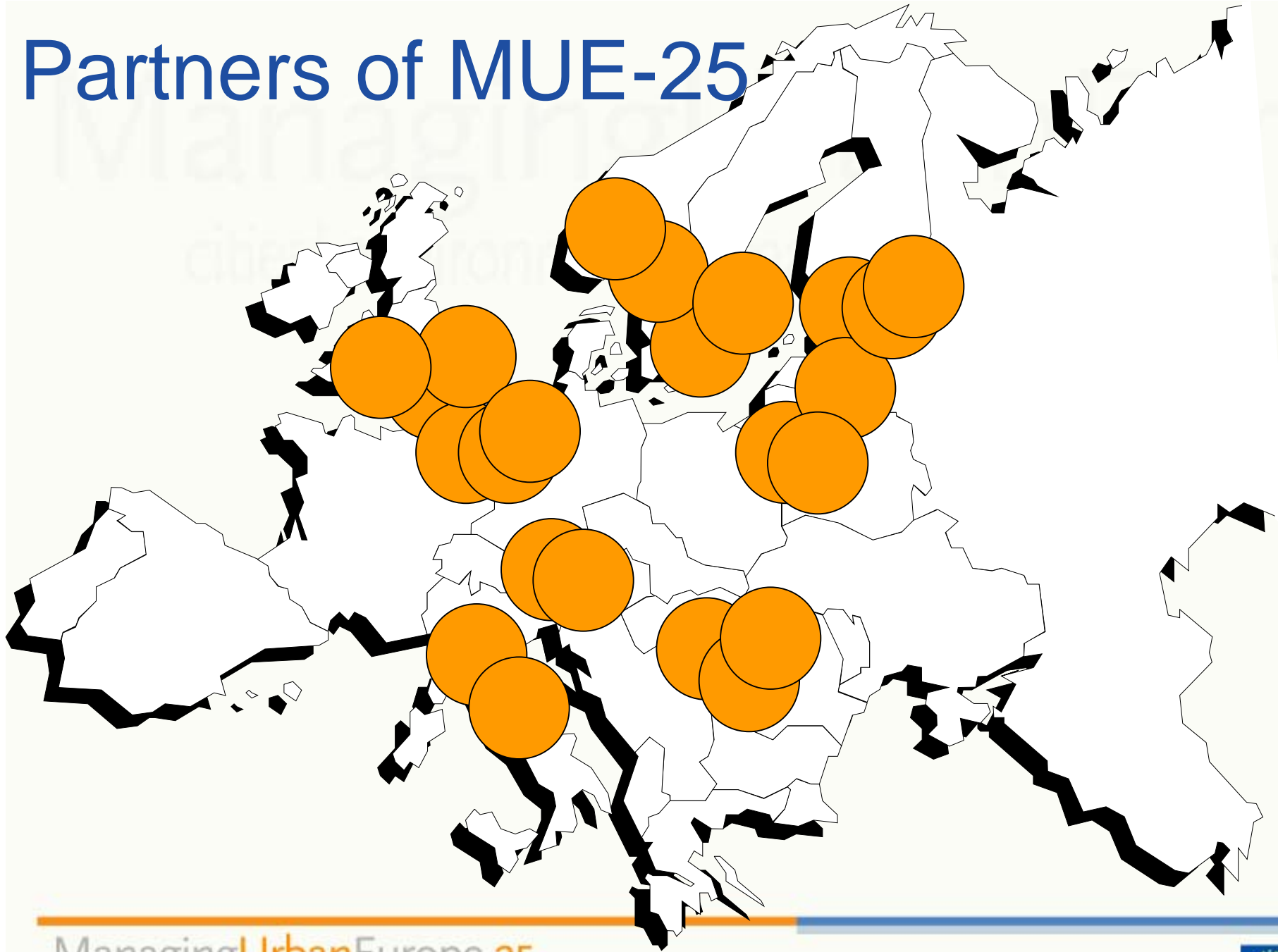


# Basic Facts

- Starts: March 2005
- Ends: February 2008
- Funding: European Commission DG Environment, Finnish Ministry of the Environment, German Federal Environment Foundation, the German Federal States of Baden-Württemberg and Bayern and participating cities
- Budget: 2,9 Meuro



# Partners of MUE-25



# Partners of MUE-25

## Project Steering Group:

- Lead partner: Union of the Baltic Cities, Commission on Environment, Turku, Finland
- ICLEI – Local Governments for Sustainability, Germany
- The University of the West of England, Bristol, United Kingdom
- UNEP/Grid-Arendal, Norway
- Bodensee-Stiftung, Germany

## Cities:

- City of Turku, Finland
- 2 City of Lahti, Finland
- 3 Municipality of Växjö, Sweden
- 4 Leeds City Council, UK
- 5 Lewes District Council, UK
- 6 Municipality of Ancona, Italy
- 7 Siena Province, Italy
- 8 City Of Riga, Latvia
- 8 Kaunas City Municipality, Lithuania
- 8 Šiauliai City Municipality, Lithuania
- 1 Local Government of Siófok, Hungary
- 1 Local Government of Balatonfüred, Hungary
- 1 City of Oslo, Norway
- 1 City of Stockholm, Sweden

## Network Partners:

- Lake Balaton Development Co-ordination Agency, Hungary
- ACR+, Belgium
- Energie-Cités, France
- ASSURRE, Belgium



# German Module

## German Cities:

Ascha

Berlin-Lichtenberg

Donaueschingen

Neu-Ulm

Tübingen

Würzburg

County of Nordhausen

Ludwigsburg

(Paderborn)

- Coordinated by ICLEI and Bodensee-Stiftung
- Following the same steps as MUE-25



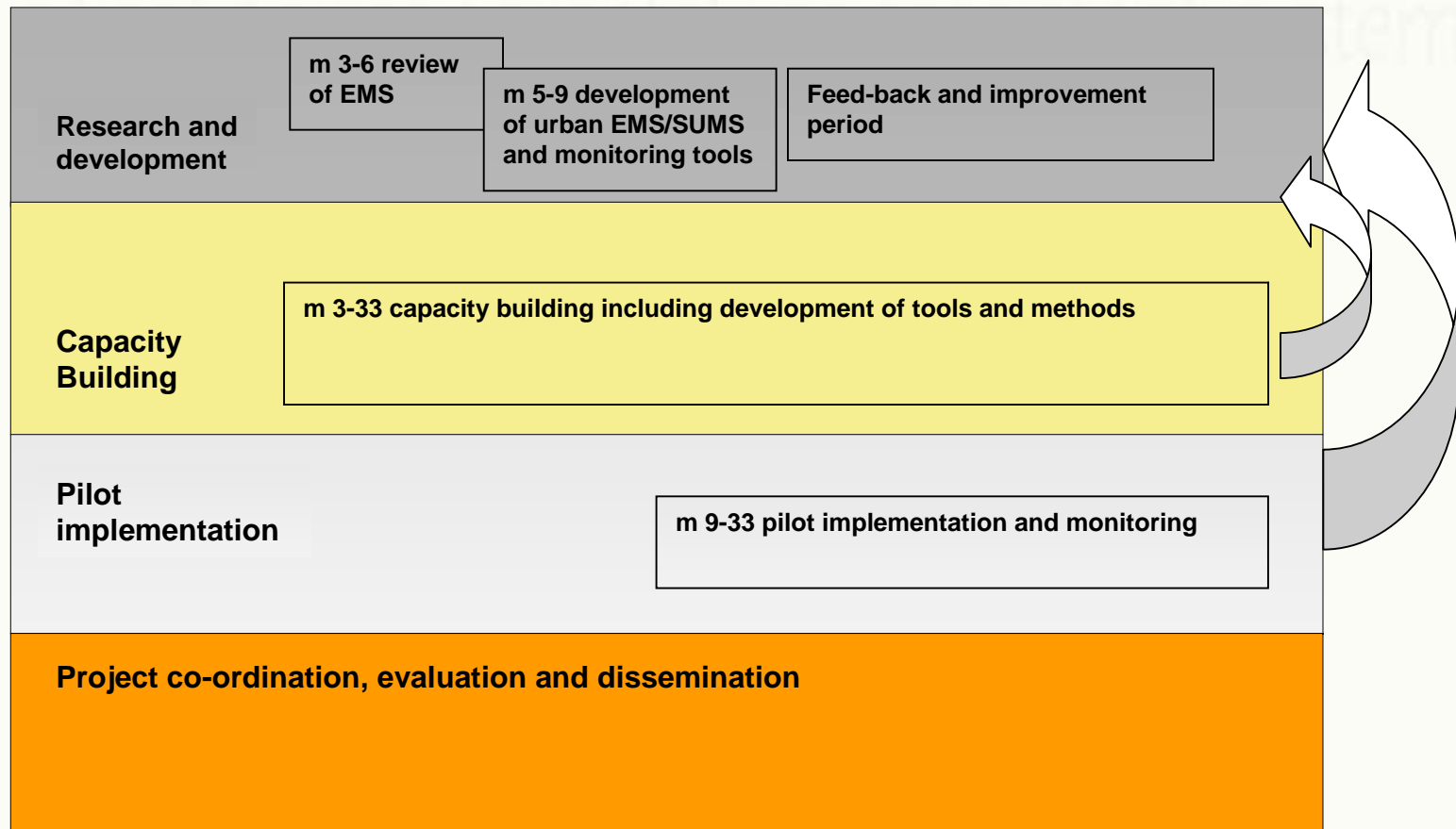
# Knowledge base of MUE – 25

- Cities' EMAS activities and projects, eg. EMAS Peer Review for Cities and ECOLUP
- “Lighter versions”, such as Baltic Cities' Municipal Environmental Auditing (MEA) and Eco-Lighthouse
- ecoBudget activities and programme of ICLEI and several European cities
- Experiences of different cities in their environmental policies and management
- Thematic Strategy on the Urban Environment within the 6EAP of European Union
- Aalborg Commitments and European Sustainable Cities and Towns Campaign





# Our operation – the main elements

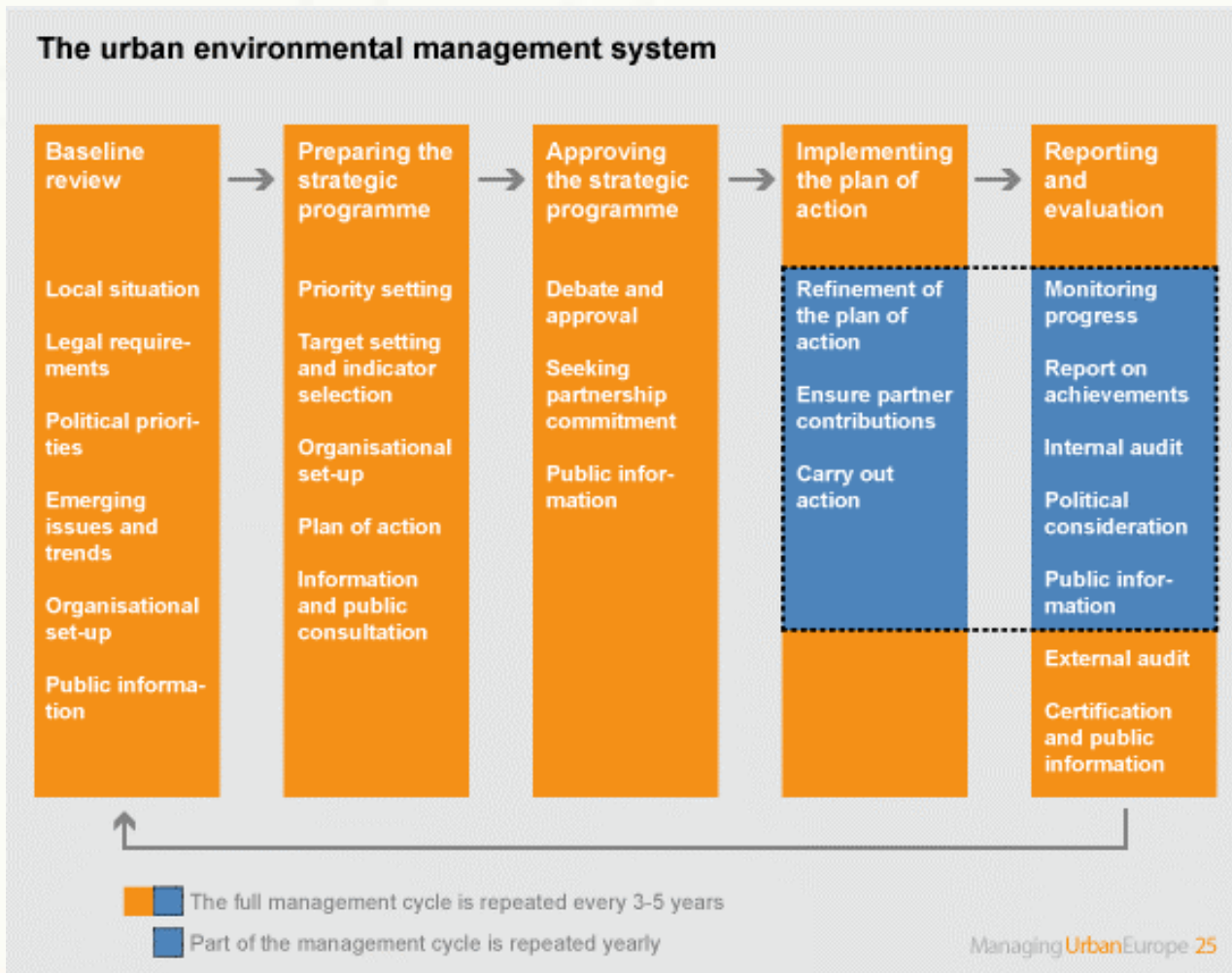


# What we suggest: a road map

- Integrate instruments with framework system
- Link management to central decision making
- Widen focus to other stakeholders in order to address whole functional urban area
- Integrate sustainability dimensions
- *Remark: Aalborg Commitments as reference document*



# The framework model



# Contact Information

Union of the Baltic Cities  
Commission on Environment Secretariat  
Linnankatu 41  
FIN-20100 Turku, Finland

Project Co-ordinator: Annika Claesson

E-mail: [annika.claesson@netti.fi](mailto:annika.claesson@netti.fi)

Phone: +358 2 262 3180

Mobile: +358 44 9075 992

Fax: +358 2 262 3450

