

Local Action

12 Years of Cities for Climate Protection Campaign



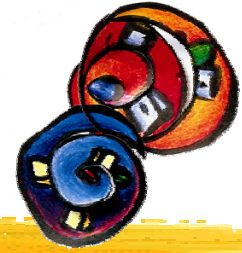
The Brazilian Local Renewables Project

Introduction to the Brazilian part of ICLEI's Local Renewables Network.



ICLEI
Local
Governments
for Sustainability

ICLEI's ^{Local}Renewables Network in Brazil



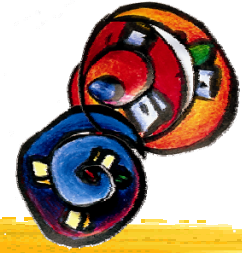
Proposal Submitted by ICLEI LACS
Secretariat to the British Embassy in Brazil

Global Opportunities Fund –GOF; Climate Change and Energy
Programme



Strengthen CCP Network in Brazil

ICLEI's ^{Local}Renewables Network in Brazil



☑ Specific Objective:

The project aims to promote the generation, supply and use of renewable energy, with a focus on the roles and responsibilities of local government as the driving force for innovation and investment toward sustainability.

☑ Time Frame:

July 2005 – July 2007

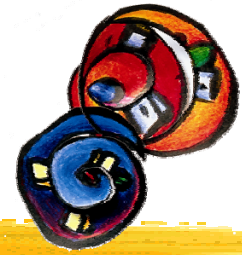
ICLEI's ^{Local}Renewables Network in Brazil



Request for Proposals:

- Sao Paulo
- Rio de Janeiro
- Porto Alegre
- Belo Horizonte
- Salvador
- Fortaleza
- Vitoria
- Curitiba
- Recife
- Palmas
- Betim
- Volta Redonda
- Santo Andre
- Santos

ICLEI's ^{Local}Renewables Network in Brazil



Selection Process:

Model Community

- Betim, Minas Gerais

Satellite Communities

- Salvador, Bahia
- Palmas, Tocantins,
- Porto Alegre, Rio Grande do Sul

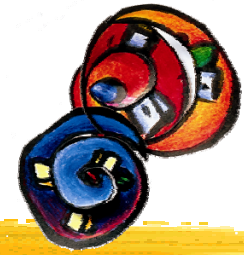
ICLEI's Local Renewables Network in Brazil



Work Plan and deliverables:

- ☑ Competence Center on Renewable Energy will be established in Betim
- ☑ Betim will adopt a Municipal Renewable Energy policy
- ☑ Betim will implement new/additional renewable projects

- ☑ An specific webpage inside ICLEI page is set up for the LR Network with links
- ☑ An Intranet access is available to members of the network
- ☑ Three Case studies will be developed



Thank you,

Margarita Maria Parra
International CCP
(margarita.parra@iclei.org)

www.iclei.org



ICLEI 2005

ICLEI
Local
Governments
for Sustainability