



# Tilburg's biodiversity strategy

*Paul Scherrenberg*

*City of Tilburg, The Netherlands*

*Session B2*

*ICLEI World Congress 2006*

*Cape Town, SA*





# Outline

- Introduction
- Scope
- Tilburg's biodiversity strategy
- Green Template
- Ecological Map
- Conclusion





# The Netherlands





# Scope

- Pan-European Ecological Network
- Dutch Ecological Network
- Regional: Province North-Brabant
- Local: Tilburg





# Biodiversity Strategy: Plan

- Plan Do Check Act
- Policy (environmental)
- Green Template
  - Map, measures & covenant between stakeholders
- Ecological Map
  - Database and geographical maps





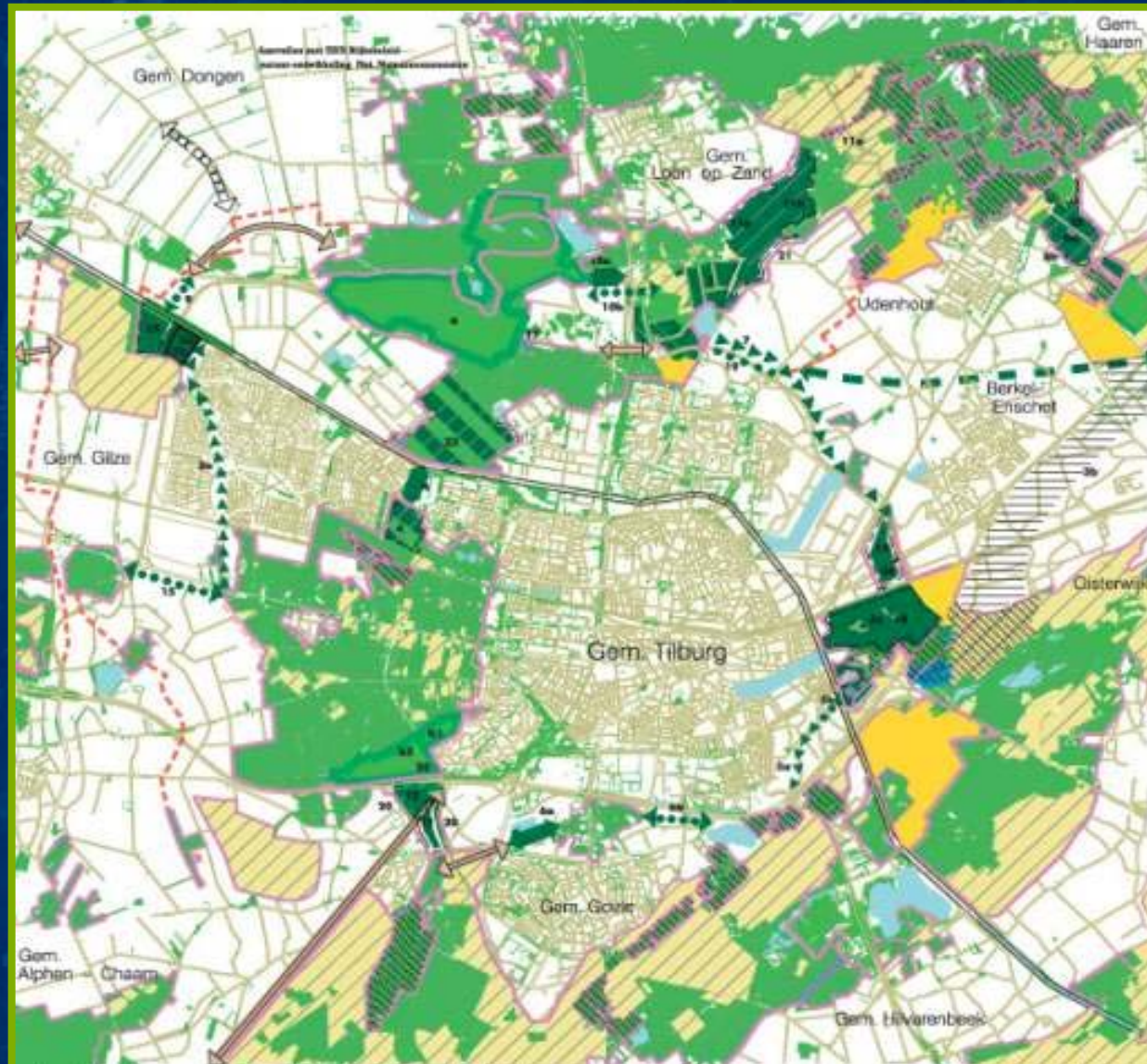
# Plan: Green Template

- Platform > Policy > Map
- Ecological structure around Tilburg
- Directs spatial planning
- Agreement between 10 stakeholders
- Protecting & connecting measures
- Nature compensation



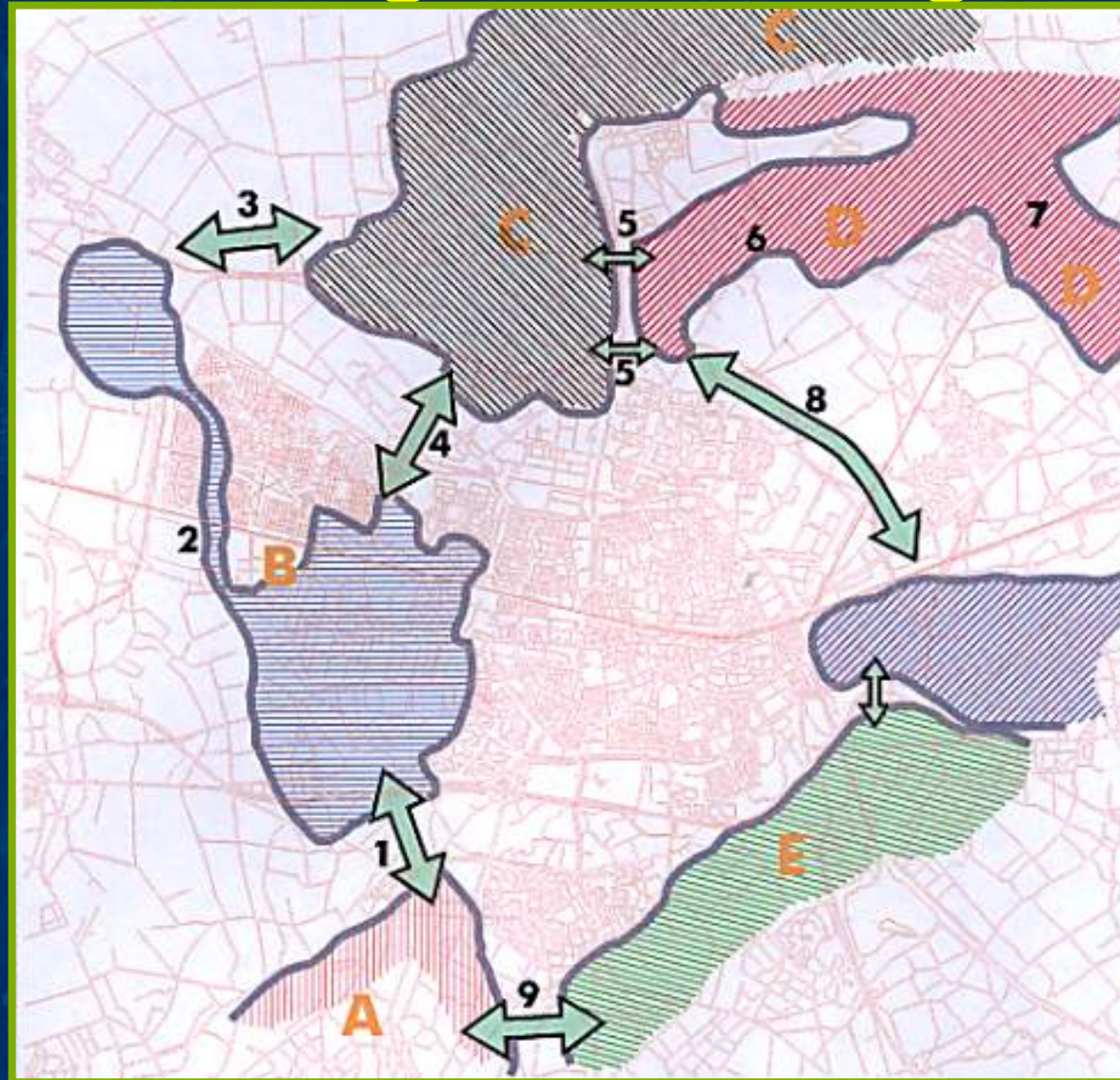


# Green Template





# Ecological Linking







# Dongezone

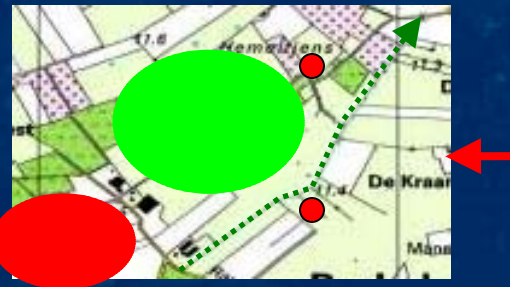
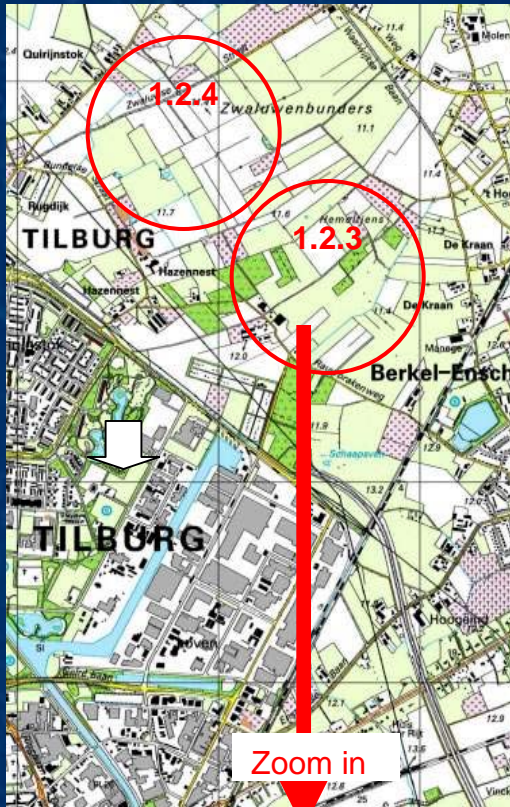








# Plan: Ecological Map

- Inventory of nature type and species
- Degree of protection
- Present and potential value
- Normative and informative
- Educational
- Platform Citynature





-  Protected area
-  Protected species (group)
-  Ecological linking zone
-  Green Template



Landschapseenheid	1	Beschrijving	Agrarisch
cultuurlandschap ...			
Landschapcluster	2		Zwaluwenbunders-
Vloevelden	...		
Deelgebied	3	Hemeltjes	...
Bijhorende elementen	3		
5	Poel		
Bosje	...		
Beleid		Streekplan, natte evz: @@@	
Groene Mal: Hemeltjes		...	
NDT	Huidig		
Potentieel		Beemdgras-raaigrasweide	
Beemdgras-raaigrasweide		...	
...			
Soortgroepen	Actueel		
Potentieel		Waardevol voor planten, mn. Grote Pimpernel	
Waardevol voor amfibieën			
Soortenlijsten	ja	<a href="#">Vogels (link naar waarnemingslijsten)</a>	
Beheer en onderhoud		....	
....			
FOTO			



# Biodiversity Strategy: Do

- Take inventory
- Protect
- Connect
- Expand
- Inform (Eco-team)
- Involve





# Biodiversity Strategy: Check

- Habitat Directive (flora & fauna)
- Water Directive
- Regular meetings
- Yearly evaluation with all stakeholders
- Monitor (quantatively, qualitatively)





# Biodiversity Strategy: Act

- Signed Countdown 2010
- Secured structural budget and fund
- 2 extra fte
- Expand to the region
- Join other initiatives
  - Green Forest
  - Sustainable Triangle
  - Land of the Future





# Conclusion

- Ecological networks are essential for biodiversity
- Network starts in your own backyard
- Participatory process
- Involve stakeholders, dialogue and agree
- Act, protect and connect





# Thank you for your attention

